



DISCOUNT CODES	
02	Schedule 80 through 8"
92	Schedule 80 10" and larger

SCHEDULE 80 - PVC Pressure Fittings

Includes:

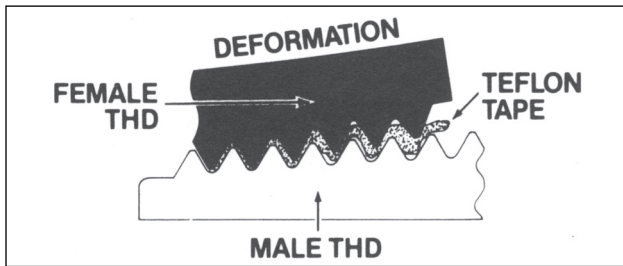
- **Schedule 80** - through 8"
- **Schedule 80** - 10" and larger
(Separate discount, call Customer Service)

List Prices

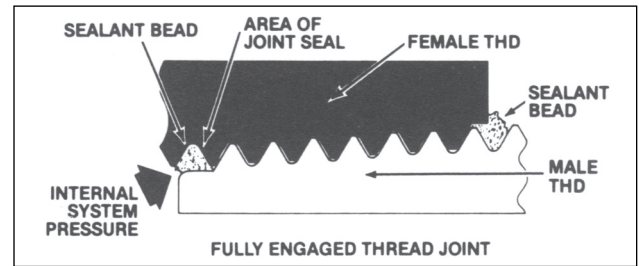
Effective:

September 26, 2010

Why Sealant is Recommended in Threaded Joints

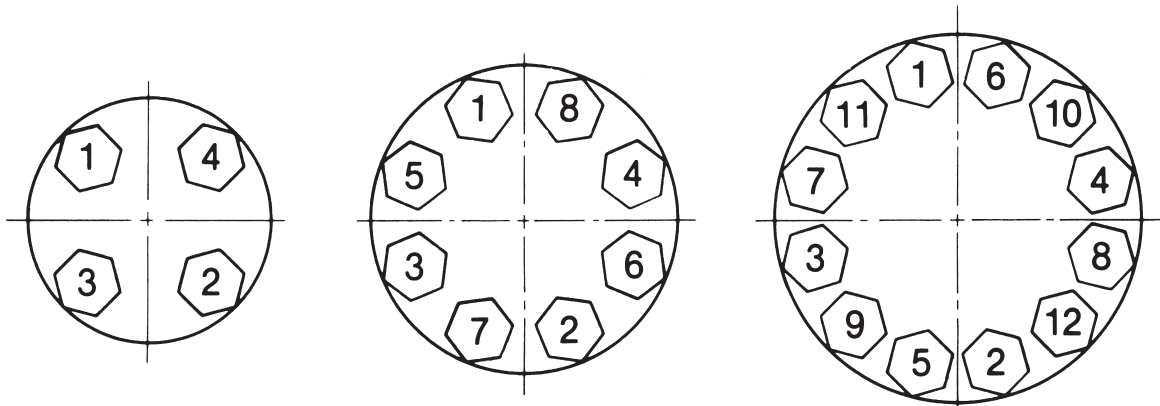


Teflon tape, when compressed between male and female threads in PVC fittings joints, can cause deformation, leading to leakage, and possibly, to cracked female fittings.



Sealant, when compressed between threads, flows outward to achieve an effective seal against leakage in PVC fittings.

Flange Installation Data Gaskets and Bolts



	Size	Bolt Circle Diameter	No. of Bolts	Bolt Size (UNC x Length)	Recommended Torque (Ft./Lbs.)
1. Recommend Gaskets: full face 1/8" thick, elastomeric, 50-70 Shore A hardness	1/2	2.37	4	1/2 - 13 x 1 3/4	15-20
	3/4	2.75	4	1/2 - 13 x 1 15/16	15-20
2. Bolt Threads should be well lubricated.	1	3.12	4	1/2 - 13 x 2	15-20
3. Nut and bolt threads should be free-running during assembly.	1 1/4	3.50	4	1/2 - 13 x 2 1/4	15-20
	1 1/2	3.87	4	1/2 - 13 x 2 3/4	15-20
4. Follow illustrated bolt-tightening sequence.	2	4.75	4	5/8 - 11 x 3	20-30
5. Always use full size flat washers with bolts and nuts.	2 1/2	5.50	4	5/8 - 11 x 3 1/4	20-30
	3	6.00	4	5/8 - 11 x 3 5/8	20-30
	4	7.50	8	5/8 - 11 x 3 3/4	20-30
	5	8.50	8	3/4 - 10 x 3 3/4	25-35
	6	9.50	8	3/4 - 10 x 4 3/8	33-50
	8	11.75	8	3/4 - 10 x 4 3/8	33-50
	10	14.25	12	7/8 - 9 x 4 1/2	53-75
	12	17.00	12	7/8 - 9 x 4 5/8	53-75

NOTE: Flanges conform to ANSI B16.5, Class 150. Socket diameters conform to ASTM D-2467. Recommended working pressure: 150 psi @ 73.4°F. Flanges not NSF listed. Use primer and heavy bodied PVC cement.

Suggested List Price

9/26/10

Tee



(slip x slip x slip)

PART NO.	SIZE (IN.)	CARTON (QTY.)	CODE	PRICE
801-002	1/4	25	02	8.86
801-003	3/8	25	02	8.86
801-005	1/2	25	02	8.86
801-007	3/4	25	02	9.28
801-010	1	25	02	11.63
801-012	1 1/4	10	02	31.89
801-015	1 1/2	10	02	31.89
801-020	2	10	02	39.87
801-025	2 1/2	5	02	43.36
801-030	3	5	02	54.19
801-040	4	5	02	62.79
801-060	6	4	02	214.38
801-080	8	2	02	497.20

Reducing Tee



(slip x slip x slip)

PART NO.	SIZE (IN.)	CARTON (QTY.)	CODE	PRICE
801-101	3/4 x 3/4 x 1/2	25	02	6.78
801-130	1 x 1 x 1/2	25	02	9.81
801-131	1 x 1 x 3/4	25	02	9.81
801-168	1 1/4 x 1 1/4 x 1	15	02	21.29
801-210	1 1/2 x 1 1/2 x 3/4	10	02	21.29
801-211	1 1/2 x 1 1/2 x 1	10	02	21.29
801-212	1 1/2 x 1 1/2 x 1 1/4	10	02	21.29
801-247	2 x 2 x 1/2	10	02	26.98
801-248	2 x 2 x 3/4	10	02	26.98
801-249	2 x 2 x 1	10	02	26.98
801-250	2 x 2 x 1 1/4	10	02	26.98
801-251	2 x 2 x 1 1/2	10	02	26.98
801-290	2 1/2 x 2 1/2 x 1 1/4	5	02	35.20
801-291	2 1/2 x 2 1/2 x 1 1/2	5	02	35.20
801-292	2 1/2 x 2 1/2 x 2	5	02	35.20
801-337	3 x 3 x 1 1/2	5	02	49.46
801-338	3 x 3 x 2	5	02	49.46
801-420	4 x 4 x 2	5	02	79.90
801-422	4 x 4 x 3	5	02	79.90
801-530	6 x 6 x 3	5	02	159.67
801-532	6 x 6 x 4	5	02	214.38
801-585	8 x 8 x 6	2	02	497.20

Tee



(slip x slip x FIPT)

PART NO.	SIZE (IN.)	CARTON (QTY.)	CODE	PRICE
802-005	1/2	25	02	14.01
802-007	3/4	25	02	18.12
802-010	1	25	02	21.20
802-012	1 1/4	10	02	22.66
802-015	1 1/2	10	02	26.62
802-020	2	10	02	32.84
802-250	2 x 2 x 1 1/4	10	02	32.84
802-251	2 x 2 x 1 1/2	10	02	32.84
802-291	2 1/2 x 2 1/2 x 1 1/2	5	02	70.91

Tee



(FIPT x FIPT x FIPT)

PART NO.	SIZE (IN.)	CARTON (QTY.)	CODE	PRICE
805-002	1/4	25	02	10.23
805-003	3/8	25	02	10.23
805-005	1/2	25	02	10.23
805-007	3/4	25	02	11.39
805-010	1	25	02	25.15
805-012	1 1/4	10	02	26.66
805-015	1 1/2	10	02	32.32
805-020	2	10	02	34.74
805-025	2 1/2	5	02	126.49
805-030	3	5	02	132.11
805-040	4	5	02	214.71

90° ELL



(slip x slip)

PART NO.	SIZE (IN.)	CARTON (QTY.)	CODE	PRICE
806-002	1/4	25	02	3.14
806-003	3/8	25	02	3.14
806-005	1/2	25	02	3.14
806-007	3/4	25	02	4.01
806-010	1	25	02	6.48
806-012	1 1/4	10	02	8.65
806-015	1 1/2	10	02	9.27
806-020	2	10	02	11.21
806-025	2 1/2	5	02	26.21
806-030	3	5	02	29.46
806-040	4	5	02	44.80
806-060	6	4	02	127.48
806-080	8	2	02	351.37

90° ELL



(slip x FIPT)

PART NO.	SIZE (IN.)	CARTON (QTY.)	CODE	PRICE
807-005	1/2	25	02	12.35
807-007	3/4	25	02	14.53
807-010	1	25	02	15.71
807-012	1 1/4	10	02	18.12
807-015	1 1/2	10	02	21.61
807-020	2	10	02	28.00

90° ELL



(FIPT x FIPT)

PART NO.	SIZE (IN.)	CARTON (QTY.)	CODE	PRICE
808-002	1/4	25	02	7.79
808-003	3/8	25	02	7.79
808-005	1/2	25	02	7.27
808-007	3/4	25	02	9.05
808-010	1	25	02	11.39
808-012	1 1/4	10	02	12.27
808-015	1 1/2	10	02	17.41
808-020	2	10	02	19.61
808-025	2 1/2	5	02	76.35
808-030	3	5	02	123.12
808-040	4	5	02	216.64

Suggested List Price

9/26/10

	PART NO.	SIZE	CARTON	CODE	PRICE
		(IN.)	(QTY.)		
22½° ELL	865-020	2	10	02	31.07
	865-030	3	5	02	79.65



(slip x slip)

Note: Meets ASTM D-2467 socket and wall dimensions, but fitting pattern is not in D-2467. Working pressure rating of 150 P.S.I. Not NSF Standard 14 listed.

	PART NO.	SIZE	CARTON	CODE	PRICE
		(IN.)	(QTY.)		
30° ELL	815-060	6	8	02	229.85



(slip x slip)

	PART NO.	SIZE	CARTON	CODE	PRICE
		(IN.)	(QTY.)		
45° ELL	817-002	¼	25	02	11.24
	817-003	⅜	25	02	11.24
	817-005	½	25	02	5.91
	817-007	¾	25	02	9.03
	817-010	1	25	02	13.54
	817-012	1¼	10	02	17.24
	817-015	1½	10	02	20.40
	817-020	2	10	02	26.44
	817-025	2½	5	02	55.50
	817-030	3	5	02	67.55
	817-040	4	5	02	121.66
	817-060	6	4	02	153.20
	817-080	8	2	02	332.15

	PART NO.	SIZE	CARTON	CODE	PRICE
		(IN.)	(QTY.)		
45° ELL	819-005	½	25	02	11.66
	819-007	¾	25	02	12.53
	819-010	1	25	02	15.73
	819-012	1¼	10	02	24.00
	819-015	1½	10	02	30.17
	819-020	2	10	02	44.73
	819-025	2½	5	02	88.50
	819-030	3	5	02	142.35
	819-040	4	5	02	204.27



(FIPT x FIPT)

	PART NO.	SIZE	CARTON	CODE	PRICE
		(IN.)	(QTY.)		
Cross	820-015	1½	25	02	77.32
	820-020	2	4	02	86.14
	820-030	3	5	02	146.49
	820-040	4	5	02	254.88



(slip x slip x slip x slip)

	PART NO.	SIZE	CARTON	CODE	PRICE
		(IN.)	(QTY.)		
Coupling	829-002	¼	25	02	9.09
	829-003	⅜	25	02	9.09
	829-005	½	25	02	5.68
	829-007	¾	25	02	7.69
	829-010	1	25	02	7.90
	829-012	1¼	10	02	12.04
	829-015	1½	10	02	12.98
	829-020	2	10	02	13.94
	829-025	2½	5	02	34.30
	829-030	3	5	02	39.40
	829-040	4	5	02	49.33
	829-060	6	5	02	106.17
	829-080	8	4	02	144.49



(slip x slip)

	PART NO.	SIZE	CARTON	CODE	PRICE
		(IN.)	(QTY.)		
Reducer Coupling	829-101	¾ x ½	25	02	6.95
	829-130	1 x ½	25	02	10.14
	829-131	1 x ¾	25	02	10.14
	829-168	1¼ x 1	10	02	20.59
	829-210	1½ x ¾	25	02	21.55
	829-211	1½ x 1	10	02	26.62
	829-212	1½ x 1¼	10	02	26.62
	829-251	2 x 1½	10	02	24.30
	829-338	3 x 2	5	02	59.69
	829-422	4 x 3	5	02	112.45
	829-532	6 x 4	5	02	229.36
829-585	8 x 6	5	02	694.67	



(slip x slip)

	PART NO.	SIZE	CARTON	CODE	PRICE
		(IN.)	(QTY.)		
Coupling	830-002	¼	25	02	6.81
	830-005	½	25	02	6.35
	830-007	¾	25	02	9.07
	830-010	1	25	02	9.73
	830-012	1¼	10	02	12.04
	830-015	1½	10	02	26.79
	830-020	2	10	02	28.12
	830-025	2½	5	02	67.13
	830-030	3	5	02	78.72
	830-040	4	5	02	136.31



(FIPT x FIPT)


	PART NO.	SIZE	CARTON	CODE	PRICE
		(IN.)	(QTY.)		
Female Adapter	835-002	¼	25	02	9.61
	835-005	½	25	02	5.32
	835-007	¾	25	02	7.90
	835-010	1	25	02	11.65
	835-012	1¼	10	02	18.87
	835-015	1½	10	02	23.13
	835-020	2	10	02	40.36
	835-025	2½	5	02	63.72
	835-030	3	5	02	71.73
	835-040	4	5	02	123.28



(slip x FIPT)


Suggested List Price

9/26/10

	PART NO.	SIZE	CARTON	CODE	PRICE
		(IN.)	(QTY.)		
Male Adapter 	836-005	1/2	25	02	6.64
	836-007	3/4	25	02	7.32
	836-010	1	25	02	12.67
	836-012	1 1/4	10	02	14.82
	836-015	1 1/2	10	02	21.29
	836-020	2	10	02	30.79
	836-025	2 1/2	5	02	35.00
	836-030	3	5	02	38.85
	836-040	4	5	02	69.12


(MIPT x slip)

PART NO.	SIZE	CARTON	CODE	PRICE
----------	------	--------	------	-------


	PART NO.	SIZE	CARTON	CODE	PRICE
		(IN.)	(QTY.)		
Reducer Bushing (flush style) 	837-052	3/8 x 1/4	25	02	5.02
	837-072	1/2 x 1/4	25	02	5.02
	837-073	1/2 x 3/8	25	02	5.02
	837-101	3/4 x 1/2	25	02	1.82
	837-130	1 x 1/2	25	02	5.24
	837-131	1 x 3/4	25	02	5.24
	837-166	1 1/4 x 1/2	10	02	8.23
	837-167	1 1/4 x 3/4	10	02	8.23
	837-168	1 1/4 x 1	10	02	8.23
	837-209	1 1/2 x 1/2	10	02	11.21
	837-210	1 1/2 x 3/4	10	02	11.21
	837-211	1 1/2 x 1	10	02	11.21
	837-212	1 1/2 x 1 1/4	10	02	11.21
	837-247	2 x 1/2	10	02	15.97
	837-248	2 x 3/4	10	02	15.97
	837-249	2 x 1	10	02	15.97
	837-250	2 x 1 1/4	10	02	15.97
	837-251	2 x 1 1/2	10	02	15.97
	837-289	2 1/2 x 1	10	02	27.72
	837-290	2 1/2 x 1 1/4	10	02	27.72
	837-291	2 1/2 x 1 1/2	10	02	27.72
	837-292	2 1/2 x 2	10	02	27.72
	837-335	3 x 1	5	02	43.99
	837-336	3 x 1 1/4	5	02	43.99
	837-337	3 x 1 1/2	5	02	43.99
	837-338	3 x 2	5	02	43.99
	837-339	3 x 2 1/2	5	02	43.99
	837-420	4 x 2	5	02	60.91
	837-421	4 x 2 1/2	5	02	60.91
	837-422	4 x 3	5	02	60.91
	837-528	6 x 2	5	02	84.70
	837-530	6 x 3	5	02	84.70
837-532	6 x 4	5	02	84.70	
837-585	8 x 6	5	02	206.04	

(sp x slip)

PART NO.	SIZE	CARTON	CODE	PRICE
----------	------	--------	------	-------


	PART NO.	SIZE	CARTON	CODE	PRICE
		(IN.)	(QTY.)		
Reducer Bushing (flush style) 	838-052	3/8 x 1/4	25	02	5.02
	838-072	1/2 x 1/4	25	02	5.02
	838-101	3/4 x 1/2	25	02	3.32
	838-130	1 x 1/2	25	02	5.24
	838-131	1 x 3/4	25	02	5.24
	838-166	1 1/4 x 1/2	25	02	10.64
	838-167	1 1/4 x 3/4	10	02	10.64
	838-168	1 1/4 x 1	10	02	10.64
	838-209	1 1/2 x 1/2	10	02	13.35
	838-210	1 1/2 x 3/4	10	02	13.35
	838-211	1 1/2 x 1	10	02	13.35
	838-212	1 1/2 x 1 1/4	10	02	13.35

(sp x FIPT)

	PART NO.	SIZE	CARTON	CODE	PRICE
		(IN.)	(QTY.)		
Reducer Bushing (flush style) 	838-247	2 x 1/2	10	02	16.32
	838-248	2 x 3/4	10	02	16.32
	838-249	2 x 1	10	02	16.32
	838-250	2 x 1 1/4	10	02	16.32
	838-251	2 x 1 1/2	10	02	16.32
	838-292	2 1/2 x 2	10	02	34.54
	838-338	3 x 2	5	02	63.96
	838-339	3 x 2 1/2	5	02	63.96
	838-420	4 x 2	5	02	98.26
	838-422	4 x 3	5	02	98.26
	838-532	6 x 4	5	02	113.19


(sp x FIPT)

PART NO.	SIZE	CARTON	CODE	PRICE
----------	------	--------	------	-------

	PART NO.	SIZE	CARTON	CODE	PRICE
		(IN.)	(QTY.)		
Reducer Bushing (flush style) 	839-052	3/8 x 1/4	25	02	11.45
	839-072	1/2 x 1/4	25	02	11.45
	839-073	1/2 x 3/8	25	02	11.45
	839-098	3/4 x 1/4	25	02	8.53
	839-099	3/4 x 3/8	25	02	8.53
	839-101	3/4 x 1/2	25	02	7.03
	839-128	1 x 1/4	25	02	13.78
	839-129	1 x 3/8	25	02	11.01
	839-130	1 x 1/2	25	02	11.01
	839-131	1 x 3/4	25	02	11.01
	839-166	1 1/4 x 1/2	10	02	11.68
	839-167	1 1/4 x 3/4	10	02	11.68
	839-168	1 1/4 x 1	10	02	11.68
	839-209	1 1/2 x 1/2	10	02	13.84
	839-210	1 1/2 x 3/4	10	02	13.84
	839-211	1 1/2 x 1	10	02	13.84
	839-212	1 1/2 x 1 1/4	10	02	13.84
	839-247	2 x 1/2	10	02	20.28
	839-248	2 x 3/4	10	02	20.28
	839-249	2 x 1	10	02	20.28
	839-250	2 x 1 1/4	10	02	20.28
	839-251	2 x 1 1/2	10	02	20.28
	839-292	2 1/2 x 2	5	02	27.47
	839-337	3 x 1 1/2	5	02	37.31
839-338	3 x 2	5	02	37.31	
839-339	3 x 2 1/2	5	02	37.31	
839-420	4 x 2	5	02	75.31	
839-422	4 x 3	5	02	98.26	

(MIPT x FIPT)

PART NO.	SIZE	CARTON	CODE	PRICE
----------	------	--------	------	-------

	PART NO.	SIZE	CARTON	CODE	PRICE
		(IN.)	(QTY.)		
Reducer Bushing (flush style) 	845-249	2 x 1	10	02	20.73

(MIPT x BSP)

Suggested List Price

9/26/10

PART NO.	SIZE	CARTON	CODE	PRICE
	(IN.)	(QTY.)		
847-002	1/4	25	02	7.22
847-003	3/8	25	02	7.22
847-005	1/2	25	02	5.56
847-007	3/4	25	02	5.86
847-010	1	25	02	10.40
847-012	1 1/4	10	02	12.56
847-015	1 1/2	10	02	12.56
847-020	2	10	02	24.80
847-025	2 1/2	5	02	50.64
847-030	3	5	02	59.26
847-040	4	5	02	99.93
847-060	6	4	02	248.60
847-080	8	4	02	319.18

Cap



(slip)

PART NO.	SIZE	CARTON	CODE	PRICE
	(IN.)	(QTY.)		
848-002	1/4	25	02	6.95
848-003	3/8	25	02	6.95
848-005	1/2	25	02	6.95
848-007	3/4	25	02	7.79
848-010	1	25	02	9.81
848-012	1 1/4	10	02	11.68
848-015	1 1/2	10	02	13.35
848-020	2	10	02	26.21
848-025	2 1/2	5	02	52.43
848-030	3	5	02	61.72
848-040	4	5	02	108.69

Cap



(FIPT)

PART NO.	SIZE	CARTON	CODE	PRICE
	(IN.)	(QTY.)		
849-007	3/4	50	02	6.53
849-010	1	50	02	5.79
849-012	1 1/4	25	02	6.53
849-015	1 1/2	10	02	9.14
849-020	2	10	02	12.09

Plug



(SP)

PART NO.	SIZE	CARTON	CODE	PRICE
	(IN.)	(QTY.)		
850-002	1/4	25	02	6.00
850-003	3/8	25	02	6.00
850-005	1/2	25	02	5.35
850-007	3/4	25	02	5.56
850-010	1	25	02	6.81
850-012	1 1/4	10	02	10.04
850-015	1 1/2	10	02	12.21
850-020	2	10	02	12.53
850-025	2 1/2	5	02	35.00
850-030	3	5	02	40.84
850-040	4	5	02	79.51

Plug



(MIPT)

PART NO.	SIZE	CARTON	CODE	PRICE
	(IN.)	(QTY.)		
851-005	1/2	25	02	17.20
851-007	3/4	25	02	18.38
851-010	1	25	02	20.47
851-012	1 1/4	10	02	21.07
851-015	1 1/2	10	02	21.55
851-020	2	10	02	28.68
851-025	2 1/2	5	02	44.27
851-030	3	5	02	48.88
851-040	4	5	02	61.90
851-060	6	5	02	97.33

Flange

(solid style)



(slip)

See NOTE under "Flange Installation Data"

PART NO.	SIZE	CARTON	CODE	PRICE
	(IN.)	(QTY.)		
852-005	1/2	25	02	20.59
852-007	3/4	25	02	24.12
852-010	1	25	02	26.41
852-012	1 1/4	10	02	36.41
852-015	1 1/2	10	02	39.74
852-020	2	10	02	40.64
852-025	2 1/2	5	02	93.44
852-030	3	5	02	96.18
852-040	4	5	02	180.71

Flange

(solid style)



(FIPT)

See NOTE under "Flange Installation Data"

PART NO.	SIZE	CARTON	CODE	PRICE
	(IN.)	(QTY.)		
853-005	1/2	25	02	24.10
853-007	3/4	25	02	28.73
853-010	1	25	02	39.23
853-012	1 1/4	10	02	48.15
853-015	1 1/2	10	02	48.15
853-020	2	10	02	71.94
853-025	2 1/2	5	02	117.21
853-030	3	5	02	141.44
853-040	4	5	02	176.22
853-060	6	5	02	214.12
853-080	8	5	02	268.02

Flange



(blind)

See NOTE under "Flange Installation Data"

PART NO.	SIZE	CARTON	CODE	PRICE
	(IN.)	(QTY.)		
854-005	1/2	25	02	17.18
854-007	3/4	25	02	18.37
854-010	1	10	02	20.45
854-012	1 1/4	10	02	21.06
854-015	1 1/2	20	02	21.50
854-020	2	20	02	28.63
854-030FT	3	5	02	48.86
854-040FT	4	5	02	61.82
854-050FT	5	5	02	97.24
854-060FT	6	5	02	97.24
854-080FT	8	5	02	158.35
854-100FT	10	2	02	205.00
854-120FT	12	1	02	221.03

Flange

(loose ring)



(slip)

FT represents FiberTuff ring
See NOTE under "Flange Installation Data"

PART NO.	SIZE	CARTON	CODE	PRICE
	(IN.)	(QTY.)		
856-005	1/2	25	02	17.27
856-007	3/4	25	02	18.51
856-010	1	25	02	20.63
856-012	1 1/4	10	02	21.28
856-015	1 1/2	10	02	21.70
856-020	2	10	02	28.85
856-030FT	3	5	02	49.26
856-040FT	4	5	02	62.33
856-050FT	5	5	02	97.23
856-060FT	6	5	02	98.03
856-080FT	8	5	02	175.38
856-100FT	10	2	02	205.00
856-120FT	12	2	02	221.03

Flange

(loose ring)



(spigot)

FT represents FiberTuff ring
See NOTE under "Flange Installation Data"

Suggested List Price

9/26/10

	PART NO.	SIZE	CARTON	CODE	PRICE
		(IN.)	(QTY.)		
Union (O-Ring type)	896-005	1/2	10	02	15.61
	896-007	3/4	10	02	16.49
	896-010	1	10	02	23.18
	896-012	1 1/4	5	02	44.99
	896-015	1 1/2	5	02	47.66
	896-020	2	5	02	58.29
	896-030	3	5	02	131.54
	896-168	1 1/4 x 1	5	02	61.35



(slip x MIPT)

Pressure Rated at 235 p.s.i. at 73.4° F.
Unions are listed as NSF 61.

	PART NO.	SIZE	CARTON	CODE	PRICE
		(IN.)	(QTY.)		
Union (O-Ring type)	897-002	1/4	10	02	21.76
	897-003	3/8	10	02	21.76
	897-005	1/2	10	02	11.40
	897-007	3/4	10	02	14.80
	897-010	1	10	02	16.88
	897-012	1 1/4	5	02	33.54
	897-015	1 1/2	5	02	37.99
	897-020	2	5	02	51.49
	897-030	3	5	02	95.88



(slip x slip)

Pressure Rated at 235 p.s.i. at 73.4° F.
Unions are listed as NSF 61.

	PART NO.	SIZE	CARTON	CODE	PRICE
		(IN.)	(QTY.)		
Union (O-Ring type)	898-005	1/2	10	02	13.51
	898-007	3/4	10	02	18.93
	898-010	1	10	02	25.16
	898-012	1 1/4	5	02	48.00
	898-015	1 1/2	5	02	59.44
	898-020	2	5	02	91.45
	898-030	3	5	02	231.97
	898-040	4	4	02	272.59



(FIPT x FIPT)

Pressure Rated at 235 p.s.i. at 73.4° F.
Unions are listed as NSF 61.

	PART NO.	SIZE	CARTON	CODE	PRICE
		(IN.)	(QTY.)		
Union (O-Ring type)	899-005	1/2	10	02	14.18
	899-007	3/4	10	02	19.84
	899-010	1	10	02	26.38
	899-012	1 1/4	5	02	50.40
	899-015	1 1/2	5	02	62.38
	899-020	2	5	02	96.04



(slip x FIPT)

Pressure Rated at 235 p.s.i. at 73.4° F.
Unions are listed as NSF 61.

	PART NO.	SIZE	CARTON	CODE	PRICE
		(IN.)	(QTY.)		
Union O-Ring (Current style)	80115	1/2	1	02	2.35
	80118	3/4	1	02	2.60
	80215	1	1	02	3.18
	80221	1 1/4	1	02	5.47
	80223	1 1/2	1	02	6.02
	80227	2	1	02	6.02
	80235	3	1	02	13.68



Viton

	PART NO.	SIZE	CARTON	CODE	PRICE
		(IN.)	(QTY.)		
Union O-Ring (Prior to 2004)	80213	1/2	1	02	2.35
	80216	3/4	1	02	2.60
	80222	1	1	02	3.18
	80225	1 1/4	1	02	5.47
	80227	1 1/2	1	02	6.02
	80231	2	1	02	7.38
	80240	3	1	02	13.68



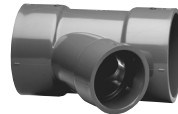
Viton

	PART NO.	SIZE	CARTON	CODE	PRICE
		(IN.)	(QTY.)		
Wye	875-020	2	10	02	96.15
	875-040	4	4	02	425.54
	875-060	6	4	02	525.13



(slip x slip x slip)

	PART NO.	SIZE	CARTON	CODE	PRICE
		(IN.)	(QTY.)		
Reducing Wye	876-532	6 x 6 x 4	5	02	398.70



(slip x slip x slip)

	PART NO.	SIZE	CARTON	CODE	PRICE
		(IN.)	(QTY.)		
Reducing	882-101	3/4 x 1/2	50	-	**



**See Nipple Price List (discounts will vary)

TBE Nipple
(MIPT x MIPT)

FIPT	Female Iron Pipe Thread
MIPT	Male Iron Pipe Thread
slip	Solvent Cement Socket
sp	Spigot
T.B.E.	Threaded Both Ends

Schedule 80 Large Diameter-PVC

	PART NO.	SIZE	CARTON	CODE	PRICE
		(IN.)	(QTY.)		(EA.)
TEE	801-100	10	1	92	1642.65
	801-120	12	1	92	2319.89



(slip)

	PART NO.	SIZE	CARTON	CODE	PRICE
		(IN.)	(QTY.)		(EA.)
COUPLING	829-100	10	1	92	495.91
	829-120	12	1	92	571.53



(slip)

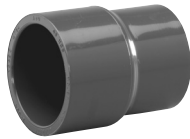
	PART NO.	SIZE	CARTON	CODE	PRICE
		(IN.)	(QTY.)		(EA.)
TEE	801-619*	10 x 2	1	92	1530.48
	801-623*	10 x 3	1	92	1530.48
	801-624*	10 x 4	1	92	1530.48
	801-626*	10 x 6	1	92	1445.55
	801-628*	10 x 8	1	92	1701.22
	801-666*	12 x 6	1	92	2617.95
	801-668*	12 x 8	1	92	2150.55
	801-670*	12 x 10	1	92	2879.88



(slip)

* Sized with bushings

	PART NO.	SIZE	CARTON	CODE	PRICE
		(IN.)	(QTY.)		(EA.)
COUPLING	829-619*	10 x 2	1	92	927.83
	829-623*	10 x 3	1	92	861.83
	829-624*	10 x 4	1	92	813.26
	829-626*	10 x 6	1	92	937.27



(slip)

* Sized with bushings

	PART NO.	SIZE	CARTON	CODE	PRICE
		(IN.)	(QTY.)		(EA.)
90° ELL	806-100	10	1	92	1572.50
	806-120	12	1	92	2049.86



(slip X slip)

	PART NO.	SIZE	CARTON	CODE	PRICE
		(IN.)	(QTY.)		(EA.)
REDUCER BUSHING	837-624*	10 x 4	1	92	573.68
	837-626	10 x 6	1	92	484.03
	837-628	10 x 8	1	92	484.03
	837-666*	12 x 6	1	92	781.05
	837-668	12 x 8	1	92	559.38
	837-670	12 x 10	1	92	559.38



(sp x slip)

* Sized with bushings

	PART NO.	SIZE	CARTON	CODE	PRICE
		(IN.)	(QTY.)		(EA.)
45° ELL	817-100	10	1	92	1045.71
	817-120	12	1	92	1348.90



(slip x sp)

	PART NO.	SIZE	CARTON	CODE	PRICE
		(IN.)	(QTY.)		(EA.)
CAP	847-100	10	1	92	326.51
	847-120	12	1	92	490.00



(slip)

**DO NOT USE MANUFACTURER'S FITTINGS FOR COMPRESSED AIR OR GASES.
DO NOT TEST PVC PIPING SYSTEMS WITH COMPRESSED AIR OR GASES.
DO NOT USE FITTINGS WITH LIQUIDS NOT RECOMMENDED BY MANUFACTURER.
MODIFICATIONS OF FITTINGS VOID THE WARRANTY.**

STANDARDS AND SPECIFICATIONS – Schedule 80

- ASTM D-1784 – Rigid Poly (Vinyl Chloride) (PVC) Compounds and Chlorinated Poly (Vinyl Chloride) (CPVC) Compounds.
- ASTM D-2464 – Threaded Poly (Vinyl Chloride) (PVC) Plastic Pipe Fittings, Schedule 80.
- ASTM D-2467 – Socket Type Poly (Vinyl Chloride) (PVC) Plastic Pipe Fittings, Schedule 80.
- ASTM F-1970 – Standard Specification for Special Engineered Fittings, Appurtenances or Valves for use in Poly (Vinyl Chloride) (PVC) or Chlorinated Poly (Vinyl Chloride) (CPVC) Systems.
- MATERIAL – Schedule 80 Fittings are produced from PVC Type 1, Cell Classification 12454-B. O-Rings are produced from a fluorocarbon elastomer (VITON).
- LISTINGS – NSF (National Sanitation Foundation) for potable water services.



7652 Morgan Road • Liverpool, New York 13090
(315) 451-1100 • (800) 776-2266 • Fax: (800) 729-3299
www.americangranby.com