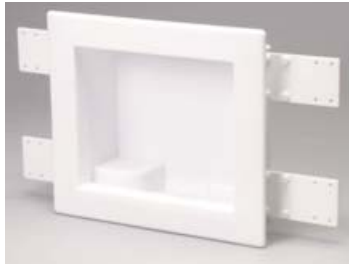


# Washer Boxes & Drains



## Washer Box Features:

- Center drain or dual drain.
- High impact polystyrene.
- 4 support brackets.
- Easy drain knockout.
- Top mount knockouts
- Box dimensions: 8 3/4" w x 7 1/2" h x 3 5/8" d
- Faceplate dimensions: 11 3/4" w x 10 1/8" h



Part Number	Valve Connection	Valve Type	Drain	Ctn Qty	List Price
<b>Standard Washer Boxes</b>					
38100	1/2" Sweat	1/4 turn brass ball valves	Center	12	\$ 104.12
38104	1/2" PEX	1/4 turn brass ball valves	Center	12	112.01
<b>Dual Drain Washer Boxes</b>					
38200	1/2" Sweat	2X4 Single Lever ball valves	Dual	12	123.81



General Purpose

## General Purpose & Shower Drain Features:

- Universal 4 1/2" Snap-Tite Strainer.
- Mechanically attach or solvent weld over 2" DWV pipe.
- No-Calk drain is designed for use with preformed shower bases and is ideal for slab construction.
- Solvent Weld drain body is sealed to shower base with rubber gasket and fiber slip washer.



42097 Shower Drain



42099 Shower Drain

## Shower Drain for Tile Base Features:

- Designed for use on built-up shower bases of tile, marble, where a shower pan liner is used.
- Reversible clamping collar is secured with stainless steel bolts into brass inserts to prevent slipping.
- Low profile design for use in tight spaces.
- Solvent welds over 2" or inside 3" Sch 40 DWV.
- Universal 4 1/4" Screw-Tite strainer.

Part Number	Material	Description	Size	Ctn Qty	List Price
<b>General Purpose Drains</b>					
43583	PVC	Drain w/ 5" stainless steel Screw-Tite strainer	3" or 4"	12	\$ <b>38.07</b>
43601	PVC	Drain w/ 5" nickle alloy grate	3" or 4"	12	<b>63.24</b>
43599	PVC	Drain w/ 5" brass grate and metal ring	3" or 4"	12	<b>83.28</b>
<b>Shower Drains</b>					
42097	PVC	Solvent weld drain w/ stainless steel strainer	2"	12	<b>28.23</b>
42099	PVC	No caulk drain w/ stainless steel strainer	2"	12	<b>35.68</b>