

PRICE GROUP	DESCRIPTION	DISCOUNT MULTIPLIER
02	SCH 80 PVC through 8"	
92	SCH 80 PVC 10" AND LARGER	
VB	GASKET for FLANGE	



**American Granby**

Phone: (315) 451-1100 or (800) 776-2266  
 Fax: (800) 729-3299  
 7652 Morgan Road • Liverpool, New York 13090

PRODUCTS | PRICE LIST

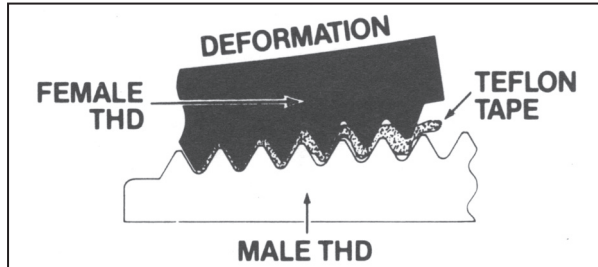
# SCHEDULE 80 PVC PRESSURE FITTINGS

**INCLUDES: SCHEDULE 80 PVC 1/4" TO 12"**

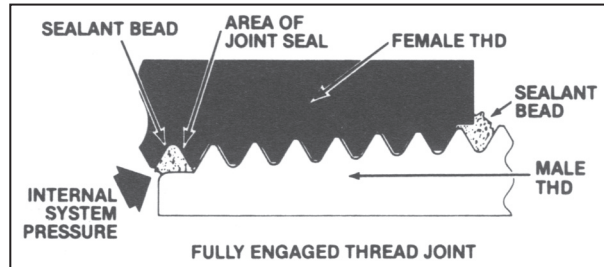
AG80P | EFFECTIVE MAY 16, 2022

**PVC SCHEDULE 80  
PRICE LIST**

# Why Westlake Pipe & Fittings Recommends Sealant in Threaded Joints



Teflon tape, when compressed between male and female threads in PVC fittings joints, can cause deformation, leading to leakage, and possibly, to cracked female fittings.



Sealant, when compressed between threads, flows outward to achieve an effective seal against leakage in PVC fittings. Use a non-hardening thread sealant that is labeled safe for PVC.

**⚠ WARNING:** care must be taken to avoid overtightening during assembly of threaded joints – do not overtorque. Generally 1 to 2 turns beyond finger tight is all that is required to obtain a leak-tight seal for most sizes. Do not use both a tape sealant and a paste sealant simultaneously. Contact Westlake Pipe & Fittings Technical Services for additional information.

**! NOTE:** Some oil based thread pastes and pipe joint compounds contain ingredients that attack PVC or CPVC materials. Suitability of thread paste sealants must be clearly established prior to use. Contact thread paste manufacturer confirm chemical compatibility prior to use.

# FLANGE INSTALLATION GUIDELINES

**FLANGED CONNECTIONS:** Properly installed flanged connections provide a transition fitting to join alternate piping materials, a mechanical means to connect to valves and other equipment, and when joining piping systems where frequent dismantling may be required. The grooved face of the flange provides a liquid tight seal on the gasket when flanges are properly assembled, supported, and proper torque is applied to the bolts.

**GASKETS:** Full face 1/8" thick elastomeric material with a Shore A Durometer hardness of 50-70; gasket material selected must be compatible with application and fluids conveyed. Variations in gasket material and shore hardness may affect sealing torque required.

**FLANGE DIMENSIONS:** Flange ring bolt hole dimensions conform to ANSI B 16.5 Class 150 bolt pattern. Threaded flange hubs are tapered iron pipe size threads per ANSI B2.1. Socket flange hubs conform to ASTM D2467 tapered socket dimensions.

**PRESSURE RATING:** Maximum pressure rating for molded flanges 1/2" thru 12" diameter 150psi non-shock at 73°F. Appropriate temperature de-rating factors must be applied when working at elevated temperatures greater than 73°F.

**BOLTS AND BOLT TORQUE:** Select proper bolt size, quantity, length, and washers for the specific sizes of flanges and equipment being assembled. Always use two (2) wide flat washers per bolt (one under the head and one under the nut). Threads should be clean and well lubricated.

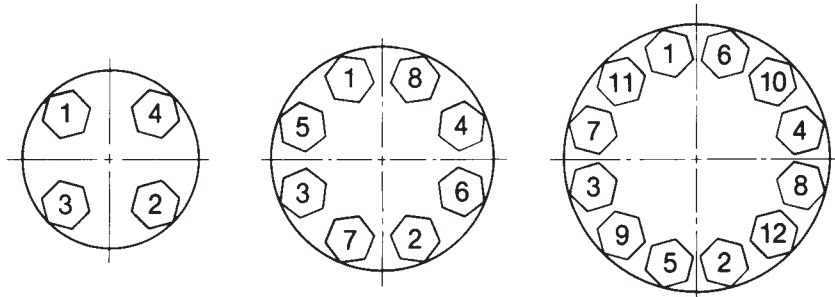
**⚠ WARNING: USE ONLY LUBRICANTS COMPATIBLE WITH PVC OR CPVC MATERIAL.**

## FLANGE ASSEMBLY:

Once the flange hub is correctly joined to the pipe and allowed to cure properly, and the piping system is supported properly, the method for joining two flanges is as follows:

1. Make sure the system is properly supported and aligned, and that mating surfaces of flanges being joined are not separated. Do not use bolts to align system or to pull flanges together.  
**⚠ WARNING: STRESS INDUCED FROM MISALIGNMENT OR IMPROPER SUPPORT WILL DAMAGE THE FLANGE.**
2. With the gasket in place, align all bolt holes of mating flanges by rotating the flange ring into position.
3. Insert all bolts, flat washers (two standard flat washers per bolt), and nuts.
4. Be certain the faces of the mating surfaces are flush against the gasket prior to bolting down the flanges.
5. Using the illustrated bolt-tightening sequence shown below, tighten all the nuts by hand until snug. Once snug by hand, tighten the bolts diametrically opposite each other (180°) using the sequence shown with a torque wrench. Apply uniform pressure across the flange by tightening in stages of 5 ft-lb increments until final torque values shown in the following table are obtained. Do not over tighten.  
**⚠ WARNING!: OVER TORQUING WILL DAMAGE THE FLANGE.**
6. Care must be taken to avoid bending stresses to the flange when mating to raised faced flange, metallic flange, stationary flanged objects or wafer-style valves. The plastic flange, attached pipe, fitting, and or valve must be supported properly to eliminate stress on the plastic flange.

# RECOMMENDED FLANGE BOLT TORQUE FOR WESTLAKE PIPE & FITTINGS PLASTIC FLANGES



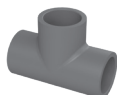
**NOTE:** Bolt length based on connecting two (2) Westlake Pipe & Fittings flanges, two (2) flat washers, and nut. Actual Bolt lengths required and torque values necessary to seal will vary based on type of equipment being joined. Adjustments will need to be made when assembling flanges to accommodate valves and other equipment.

Reference ASME B16.5 and ASME NM-1 as applicable. Contact Westlake Pipe & Fittings Technical Services for additional information.

**NOTE:** certain applications may require flange bolts to be re-torqued at least 24 hours after gasket installation depending on flange materials being joined (i.e. transition from PVC to HDPE), and gasket material selected. Work with gasket manufacturer for proper material selection and other gasket design recommendations prior to installation. When evaluating gasket material, be certain to include any surge pressure that could be caused by opening valves and starting pumps.

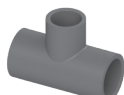
Flange Size	No. of Bolt Holes	Bolt Dia. (in.)	Min. Bolt Length (in.)	Recommended Torque (Ft./Lbs.)
½	4	½	2	15-20
¾	4	½	2	15-20
1	4	½	2¼	15-20
1¼	4	½	2¼	15-20
1½	4	½	2½	15-20
2	4	5/8	3	20-30
2½	4	5/8	3¼	20-30
3	4	5/8	3¼	20-30
4	8	5/8	3½	20-30
5	8	¾	3¾	25-35
6	8	¾	4	33-50
8	8	¾	4½	33-50
10	12	7/8	5	53-75
12	12	7/8	5	53-75

Use primer and appropriate heavy-bodied solvent cement for materials being joined and allow to cure properly prior to flange assembly - follow Westlake Pipe & Fittings solvent welding instructions and/or contact Westlake Pipe & Fittings Technical Services for additional information.



Slip x Slip x Slip

TEE				
Part No	Size (in)	Ctn Qty	Code	List Price
801-002	¼	25	02	20.23
801-003	⅜	50	02	20.23
801-005	½	25	02	20.23
801-007	¾	25	02	21.17
801-010	1	25	02	26.52
801-012	1¼	10	02	72.80
801-015	1½	10	02	72.80
801-020	2	10	02	91.05
801-025	2½	5	02	98.98
801-030	3	5	02	123.72
801-040	4	5	02	143.37
801-060	6	4	02	489.45
801-080	8	2	02	1135.18
801-100	10	1	92	3750.39
801-120	12	1	92	5296.59



Slip x Slip x Slip

REDUCING TEE con't.				
Part No	Size (in)	Ctn Qty	Code	List Price
801-417	4 x 4 x 1*	5	02	223.27
801-418	4 x 4 x 1¼*	5	02	223.27
801-419	4 x 4 x 1½*	5	02	182.46
801-420	4 x 4 x 2	5	02	182.46
801-421	4 x 2½*	5	02	534.47
801-422	4 x 4 x 3	5	02	182.46
801-525	6 x 6 x 1*	6	02	364.54
801-526	6 x 6 x 1¼*	4	02	474.47
801-527	6 x 6 x 1½*	4	02	474.47
801-528	6 x 6 x 2*	6	02	364.54
801-529	6 x 6 x 2½*	4	02	474.09
801-530	6 x 6 x 3	5	02	364.54
801-532	6 x 6 x 4	5	02	489.45
801-580	8 x 8 x 3**	1	02	1325.26
801-585	8 x 8 x 6*	2	02	1135.18
801-623	10 x 10 x 3*	1	92	3494.25
801-624	10 x 10 x 4*	1	92	3494.25
801-626	10 x 10 x 6*	1	92	3300.35
801-628	10 x 10 x 8*	1	92	3884.05
801-666	12 x 12 x 6*	1	92	5977.08
801-668	12 x 12 x 8*	1	92	4909.93
801-670	12 x 12 x 10*	1	92	6575.11

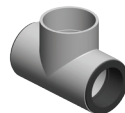
\*Sized with BUSHING  
\*\* Sized with 2 BUSHINGS



Slip x Slip x Slip

NEW PRODUCT

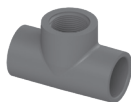
REDUCING TEE				
Part No	Size (in)	Ctn Qty	Code	List Price
801-072	½ x ½ x ¼	25	02	24.35
801-073	½ x ⅜	25	02	24.35
801-074	½ x ¾*	25	02	32.13
801-101	¾ x ¾ x ½	25	02	15.51
801-130	1 x 1 x ½	25	02	22.39
801-131	1 x 1 x ¾	25	02	22.39
801-157	1¼ x 1 x ¾*	15	02	36.95
801-158	1¼ x 1 x 1*	15	02	36.95
801-159	1¼ x 1 x 1¼*	15	02	36.95
801-166	1¼ x 1¼ x ½*	10	02	61.78
801-167	1¼ x 1¼ x ¾*	10	02	48.61
801-168	1¼ x 1¼ x 1	15	02	48.61
801-202	1½ x 1¼ x 1*	10	02	46.20
801-209	1½ x 1½ x ½*	10	02	48.61
801-210	1½ x 1½ x ¾	10	02	48.61
801-211	1½ x 1½ x 1	10	02	48.61
801-212	1½ x 1½ x 1¼	10	02	48.61
801-247	2 x 2 x ½	10	02	61.59
801-248	2 x 2 x ¾	10	02	61.59
801-249	2 x 2 x 1	10	02	61.59
801-250	2 x 2 x 1¼	10	02	72.11
801-251	2 x 2 x 1½	10	02	61.59
801-289	2½ x 2½ x 1*	10	02	80.34
801-290	2½ x 2½ x 1¼	5	02	80.34
801-291	2½ x 2½ x 1½	5	02	80.34
801-292	2½ x 2½ x 2	5	02	80.34
801-333	3 x 3 x ½*	5	02	112.90
801-334	3 x 3 x ¾*	5	02	127.42
801-335	3 x 3 x 1*	5	02	112.90
801-336	3 x 3 x 1¼*	5	02	112.90
801-337	3 x 3 x 1½	5	02	112.91
801-338	3 x 3 x 2	5	02	112.91
801-339	3 x 3 x 2½*	6	02	112.90
801-415	4 x 4 x ½*	5	02	223.27
801-416	4 x 4 x ¾*	5	02	223.27



Slip x Slip x Slip

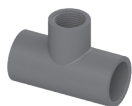
BULLHEAD TEE				
Part No	Size (in)	Ctn Qty	Code	List Price
801-536	6 x 6 x 8*	5	02	2151.28
801-537	6 x 6 x 10*	5	92	6176.78
801-589	8 x 8 x 10*	5	92	6176.78
801-591	8 x 8 x 12*	5	92	8098.16
801-632	10 x 10 x 12*	5	92	8135.55

\*Sized with BUSHING



Slip x Slip x FPT

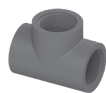
TEE				
Part No	Size (in)	Ctn Qty	Code	List Price
802-005	½	25	02	32.02
802-007	¾	25	02	41.37
802-010	1	25	02	48.40
802-012	1¼	10	02	51.72
802-015	1½	5	02	60.77
802-020	2	5	02	74.98



Slip x Slip x FPT

REDUCING TEE				
Part No	Size (in)	Ctn Qty	Code	List Price
802-072	1/2 x 1/2 x 1/4*	25	02	33.92
802-101	3/4 x 3/4 x 1/2	15	02	29.36
802-130	1 x 1 x 1/2*	50	02	30.51
802-131	1 x 1 x 3/4*	15	02	39.20
802-166	1 1/4 x 1 1/4 x 1/2*	25	02	49.89
802-167	1 1/4 x 1 1/4 x 3/4*	15	02	49.89
802-168	1 1/4 x 1 1/4 x 1*	10	02	99.05
802-209	1 1/2 x 1 1/2 x 1/2*	25	02	61.78
802-210	1 1/2 x 1 1/2 x 3/4*	20	02	61.78
802-211	1 1/2 x 1 1/2 x 1*	10	02	61.78
802-212	1 1/2 x 1 1/2 x 1 1/4*	10	02	61.78
802-247	2 x 2 x 1/2*	10	02	70.57
802-248	2 x 2 x 3/4*	10	02	70.57
802-249	2 x 2 x 1*	10	02	93.89
802-250	2 x 2 x 1 1/4	10	02	93.89
802-251	2 x 2 x 1 1/2	10	02	130.93
802-291	2 1/2 x 2 1/2 x 1 1/2	5	02	162.50
802-292	2 1/2 x 2 1/2 x 2*	10	02	181.40
802-333	3 x 3 x 1/2*	5	02	127.42
802-334	3 x 3 x 3/4*	5	02	127.42
802-335	3 x 3 x 1*	5	02	153.25
802-336	3 x 3 x 1 1/4*	5	02	153.25
802-337	3 x 3 x 1 1/2*	5	02	153.25
802-338	3 x 3 x 2*	5	02	195.70
802-339	3 x 3 x 2 1/2*	5	02	275.21
802-415	4 x 4 x 1/2*	5	02	224.23
802-416	4 x 4 x 3/4*	5	02	224.23
802-417	4 x 4 x 1*	5	02	224.23
802-418	4 x 4 x 1 1/4*	5	02	224.23
802-419	4 x 4 x 1 1/2*	5	02	224.23
802-420	4 x 4 x 2*	5	02	335.13
802-421	4 x 4 x 2 1/2*	5	02	335.13
802-422	4 x 4 x 3*	5	02	375.20
802-528	6 x 6 x 2*	1	02	950.14
802-529	6 x 6 x 2 1/2*	4	02	521.73
802-530	6 x 6 x 3*	5	02	728.30
802-532	6 x 6 x 4*	1	02	1177.39

\*Sized with BUSHING



FPT x FPT x FPT

TEE				
Part No	Size (in)	Ctn Qty	Code	List Price
805-002	1/4	25	02	23.37
805-003	3/8	25	02	23.37
805-005	1/2	25	02	23.37
805-007	3/4	25	02	26.00
805-010	1	25	02	57.40
805-012	1 1/4	10	02	60.85
805-015	1 1/2	10	02	73.77
805-020	2	10	02	79.28
805-025	2 1/2	5	02	288.80
805-030	3	5	02	301.63
805-040	4	5	02	490.20

ELBOWS



Slip x Slip

90° ELL				
Part No	Size (in)	Ctn Qty	Code	List Price
806-002	1/4	25	02	7.15
806-003	3/8	25	02	7.15
806-005	1/2	25	02	7.15
806-007	3/4	25	02	9.14
806-010	1	25	02	14.79
806-012	1 1/4	10	02	19.76
806-015	1 1/2	10	02	21.16
806-020	2	10	02	25.59
806-025	2 1/2	5	02	59.83
806-030	3	5	02	67.24
806-040	4	5	02	102.27
806-060	6	4	02	291.05
806-080	8	2	02	802.20
806-100	10	1	92	3590.17
806-120	12	1	92	4680.07



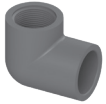
Slip x Slip

REDUCING 90° ELL				
Part No	Size (in)	Ctn Qty	Code	List Price
<b>NEW</b> 806-052	3/8 x 1/4*	25	02	34.78
<b>NEW</b> 806-072	1/2 x 1/4*	25	02	32.09
<b>NEW</b> 806-073	1/2 x 3/8*	25	02	32.09
<b>NEW</b> 806-101	3/4 x 1/2*	25	02	33.51
<b>NEW</b> 806-130	1 x 1/2*	25	02	41.37
<b>NEW</b> 806-131	1 x 3/4*	25	02	39.12
<b>NEW</b> 806-167	1 1/4 x 3/4*	10	02	71.52
<b>NEW</b> 806-168	1 1/4 x 1*	10	02	70.64
<b>NEW</b> 806-209	1 1/2 x 1/2*	10	02	52.68
<b>NEW</b> 806-210	1 1/2 x 3/4*	10	02	52.68
<b>NEW</b> 806-211	1 1/2 x 1*	10	02	49.27
<b>NEW</b> 806-212	1 1/2 x 1 1/4*	10	02	47.48
<b>NEW</b> 806-247	2 x 1/2*	10	02	59.33
<b>NEW</b> 806-248	2 x 3/4*	10	02	57.99
<b>NEW</b> 806-249	2 x 1*	10	02	61.57
<b>NEW</b> 806-250	2 x 1 1/4*	10	02	61.11
<b>NEW</b> 806-251	2 x 1 1/2*	10	02	59.33
<b>NEW</b> 806-289	2 1/2 x 1*	5	02	121.80
<b>NEW</b> 806-290	2 1/2 x 1 1/4*	5	02	135.26
<b>NEW</b> 806-291	2 1/2 x 1 1/2*	5	02	135.26
<b>NEW</b> 806-292	2 1/2 x 2*	5	02	142.01
<b>NEW</b> 806-335	3 x 1*	5	02	168.29
<b>NEW</b> 806-336	3 x 1 1/4*	5	02	180.87
<b>NEW</b> 806-337	3 x 1 1/2*	5	02	173.23
<b>NEW</b> 806-338	3 x 2*	5	02	186.15
<b>NEW</b> 806-339	3 x 2 1/2*	5	02	181.32
<b>NEW</b> 806-420	4 x 2*	5	02	226.82
<b>NEW</b> 806-422	4 x 3*	5	02	239.83
<b>NEW</b> 806-528	6 x 2*	4	02	638.63
<b>NEW</b> 806-530	6 x 3*	4	02	637.27
<b>NEW</b> 806-532	6 x 4*	4	02	635.48
<b>NEW</b> 806-535	6 x 8*	2	02	1337.65

\*Sized with BUSHING

# PVC SCHEDULE 80 PRICE LIST

## ELBOWS



Slip x FPT

90° ELL					
Part No	Size (in)	Ctn Qty	Code	List Price	
807-005	1/2	25	02	28.18	
807-007	3/4	25	02	33.16	
807-010	1	25	02	35.88	
807-012	1 1/4	10	02	41.37	
807-015	1 1/2	10	02	49.35	
807-020	2	10	02	63.91	



Slip x Slip

22 1/2° ELL					
Part No	Size (in)	Ctn Qty	Code	List Price	
865-020	2	50	02	70.95	
865-030	3	50	02	181.83	
865-100*	10	1	92	1411.10	
865-120*	12	1	92	2065.68	

Note: Meets ASTM D-2467 socket and wall dimensions, but fitting pattern is not in D-2467. Working pressure rating of 150 p.s.i. Not NSF Standard 14 Listed.  
\* Fabricated from Pipe



Slip x FPT

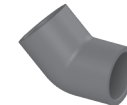
REDUCING 90° ELL					
Part No	Size (in)	Ctn Qty	Code	List Price	
<b>NEW</b> 807-052	3/8 x 1/4*		02	34.78	
<b>NEW</b> 807-072	1/2 x 1/4*		02	33.88	
<b>NEW</b> 807-101	3/4 x 1/2*		02	33.51	
<b>NEW</b> 807-130	1 x 1/2*		02	41.78	
<b>NEW</b> 807-131	1 x 3/4*		02	40.00	
<b>NEW</b> 807-166	1 1/4 x 1/2*		02	63.34	
<b>NEW</b> 807-167	1 1/4 x 3/4*		02	62.88	
<b>NEW</b> 807-168	1 1/4 x 1*		02	67.83	
<b>NEW</b> 807-209	1 1/2 x 1/2*		02	42.71	
<b>NEW</b> 807-210	1 1/2 x 3/4*		02	40.90	
<b>NEW</b> 807-211	1 1/2 x 1*		02	45.96	
<b>NEW</b> 807-212	1 1/2 x 1 1/4*		02	44.16	
<b>NEW</b> 807-247	2 x 1/2*		02	54.66	
<b>NEW</b> 807-249	2 x 1*		02	56.00	
<b>NEW</b> 807-250	2 x 1 1/4*		02	56.46	
<b>NEW</b> 807-251	2 x 1 1/2*		02	52.87	
<b>NEW</b> 807-292	2 1/2 x 1 1/4*		02	123.28	
<b>NEW</b> 807-338	3 x 2*		02	162.76	
<b>NEW</b> 807-339	3 x 2 1/2*		02	151.54	
<b>NEW</b> 807-420	4 x 2*		02	215.77	
<b>NEW</b> 807-422	4 x 3*		02	225.64	
<b>NEW</b> 807-532	6 x 4*		02	737.83	

\*Sized with BUSHING



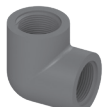
Slip x Slip

30° ELL					
Part No	Size (in)	Ctn Qty	Code	List Price	
815-060	6	8	02	411.40	



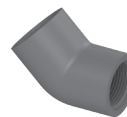
Slip x Slip

45° ELL					
Part No	Size (in)	Ctn Qty	Code	List Price	
817-002	1/4	25	02	25.65	
817-003	3/8	50	02	25.65	
817-005	1/2	25	02	13.48	
817-007	3/4	25	02	20.61	
817-010	1	25	02	30.90	
817-012	1 1/4	10	02	39.37	
817-015	1 1/2	10	02	46.57	
817-020	2	10	02	60.34	
817-025	2 1/2	5	02	126.72	
817-030	3	5	02	154.26	
817-040	4	5	02	277.74	
817-060	6	4	02	349.76	
817-080	8	2	02	758.30	
817-100	10	1	92	2387.46	
817-120	12	1	92	3079.66	



FPT x FPT

90° ELL					
Part No	Size (in)	Ctn Qty	Code	List Price	
808-002	1/4	25	02	17.78	
808-003	3/8	25	02	17.78	
808-005	1/2	25	02	16.59	
808-007	3/4	25	02	20.68	
808-010	1	25	02	26.00	
808-012	1 1/4	10	02	28.01	
808-015	1 1/2	10	02	39.77	
808-020	2	10	02	44.75	
808-025	2 1/2	5	02	174.33	
808-030	3	5	02	281.11	
808-040	4	5	02	494.61	



FPT x FPT

45° ELL					
Part No	Size (in)	Ctn Qty	Code	List Price	
819-005	1/2	25	02	26.61	
819-007	3/4	20	02	28.61	
819-010	1	25	02	35.95	
819-012	1 1/4	15	02	54.78	
819-015	1 1/2	10	02	68.87	
819-020	2	5	02	102.13	
819-025	2 1/2	5	02	202.07	
819-030	3	5	02	324.99	
819-040	4	5	02	466.38	



Slip x Slip

1 1/4° ELL					
Part No	Size (in)	Ctn Qty	Code	List Price	
861-100*	10	1	92	1411.10	
861-120*	12	1	92	2065.68	

\* Fabricated from Pipe



## CROSS



Slip x Slip  
x Slip x Slip

### CROSS

Part No	Size (in)	Ctn Qty	Code	List Price
820-015	1½	25	02	176.54
820-020	2	4	02	196.65
820-030	3	5	02	334.46
820-040	4	3	02	581.92



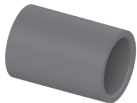
Slip x Slip  
x Slip x Slip

### REDUCING CROSS

Part No	Size (in)	Ctn Qty	Code	List Price
820-209	1½ X ½*	20	02	214.36
820-210	1½ X ¾*	15	02	214.36
820-211	1½ X 1*	25	02	214.36
820-212	1½ X 1¼*	25	02	214.36

\*Sized with BUSHING

## COUPLINGS



Slip x Slip

### COUPLING

Part No	Size (in)	Ctn Qty	Code	List Price
829-002	¼	25	02	20.77
829-003	⅜	25	02	20.77
829-005	½	25	02	12.97
829-007	¾	25	02	17.57
829-010	1	25	02	18.05
829-012	1¼	10	02	27.50
829-015	1½	10	02	29.65
829-020	2	10	02	31.83
829-025	2½	5	02	78.34
829-030	3	5	02	89.96
829-040	4	5	02	112.64
829-060	6	5	02	242.38
829-080	8	4	02	329.89
829-100	10	1	92	1132.20
829-120	12	1	92	1304.85



Slip x Slip

### REDUCER COUPLING

Part No	Size (in)	Ctn Qty	Code	List Price
829-052	⅜ x ¼*	25	02	20.77
829-072	½ x ¼	25	02	20.77
829-101	¾ x ½	20	02	15.88
829-131	1 x ¾	25	02	23.13
829-166	1¼ x ½*	25	02	47.00
829-167	1¼ x ¾*	25	02	47.00
829-168	1¼ x 1	10	02	47.00
829-209	1½ x ½*	25	02	49.20
829-210	1½ x ¾*	25	02	49.20
829-211	1½ x 1	10	02	60.77

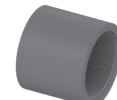


Slip x Slip

### REDUCER COUPLING con't.

Part No	Size (in)	Ctn Qty	Code	List Price
829-212	1½ x 1¼	10	02	60.77
829-247	2 x ½*	25	02	55.48
829-248	2 x ¾*	10	02	55.48
829-249	2 x 1*	25	02	55.48
829-250	2 x 1¼*	10	02	55.48
829-251	2 x 1½*	5	02	55.48
829-290	2½ x 1¼*	10	02	104.83
829-291	2½ x 1½*	10	02	73.99
829-292	2½ x 2*	10	02	73.99
829-335	3 x 1*	8	02	169.24
829-336	3 x 1¼*	6	02	169.24
829-337	3 x 1½*	8	02	169.24
829-338	3 x 2	5	02	136.27
829-339	3 x 2½*	10	02	194.30
829-417	4 x 1*	6	02	281.45
829-419	4 x 1½*	6	02	281.45
829-420	4 x 2*	6	02	259.82
829-421	4 x 2½*	4	02	259.82
829-422	4 x 3	5	02	256.74
829-528	6 x 2*	6	02	642.83
829-530	6 x 3*	5	02	649.41
829-532	6 x 4*	5	02	523.67
829-585	8 x 6	2	02	1586.01
829-619	10 x 2*	1	92	2118.33
829-623	10 x 3*	1	92	1967.67
829-624	10 x 4*	1	92	1856.78
829-626	10 x 6*	1	92	2139.89
829-628	10 x 8*	1	92	1856.78
829-668	12 x 8*	1	92	2112.84
829-670	12 x 10*	1	92	2112.84

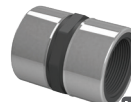
\*Sized with BUSHING



FPT x FPT

### COUPLING

Part No	Size (in)	Ctn Qty	Code	List Price
830-002	¼	25	02	15.54
830-005	½	25	02	14.47
830-007	¾	25	02	20.74
830-010	1	25	02	22.22
830-012	1¼	10	02	27.50
830-015	1½	10	02	61.13
830-020	2	10	02	64.22
830-025	2½	5	02	153.28
830-030	3	5	02	179.71
830-040	4	5	02	311.21

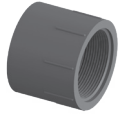


FPT x FPT

### COUPLING (SPECIAL REINFORCED)

Part No	Size (in)	Ctn Qty	Code	List Price
<b>NEW</b> 830-005SR	½	25	02	33.01
<b>NEW</b> 830-007SR	¾	25	02	47.09
<b>NEW</b> 830-010SR	1	25	02	50.18
<b>NEW</b> 830-012SR	1¼	10	02	62.74
<b>NEW</b> 830-015SR	1½	10	02	138.51
<b>NEW</b> 830-020SR	2	10	02	145.33

ADAPTERS



Slip x FPT

FEMALE ADAPTER				
Part No	Size (in)	Ctn Qty	Code	List Price
835-002	1/4	50	02	21.95
835-005	1/2	25	02	12.13
835-007	3/4	25	02	18.05
835-010	1	25	02	26.60
835-012	1 1/4	10	02	43.07
835-015	1 1/2	10	02	52.80
835-020	2	10	02	92.14
835-025	2 1/2	5	02	145.47
835-030	3	5	02	163.76
835-040	4	5	02	281.49



Slip x FPT

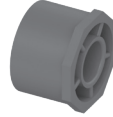
FEMALE ADAPTER (SPECIAL REINFORCED)				
Part No	Size (in)	Ctn Qty	Code	List Price
<b>NEW PRODUCT</b> 835-005SR	1/2	25	02	27.80
<b>NEW PRODUCT</b> 835-007SR	3/4	25	02	40.52
<b>NEW PRODUCT</b> 835-010SR	1	25	02	60.14
<b>NEW PRODUCT</b> 835-012SR	1 1/4	10	02	97.29
<b>NEW PRODUCT</b> 835-015SR	1 1/2	10	02	119.74
<b>NEW PRODUCT</b> 835-020SR	2	10	02	175.39



MPT x Slip

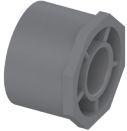
MALE ADAPTER				
Part No	Size (in)	Ctn Qty	Code	List Price
836-005	1/2	25	02	15.20
836-007	3/4	25	02	16.72
836-010	1	25	02	28.95
836-012	1 1/4	10	02	33.83
836-015	1 1/2	10	02	48.61
836-020	2	10	02	70.32
836-025	2 1/2	5	02	79.91
836-030	3	5	02	88.68
836-040	4	5	02	157.82

BUSHINGS



SP x Slip

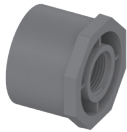
REDUCER BUSHING (FLUSH STYLE)				
Part No	Size (in)	Ctn Qty	Code	List Price
837-052	3/8 x 1/4	25	02	11.45
837-072	1/2 x 1/4	25	02	11.45
837-073	1/2 x 3/8	25	02	11.45
837-101	3/4 x 1/2	25	02	4.16
837-129	1 x 3/8*	50	02	23.89
837-130	1 x 1/2	25	02	12.00
837-131	1 x 3/4	25	02	12.00
837-166	1 1/4 x 1/2	10	02	18.80
837-167	1 1/4 x 3/4	10	02	18.80
837-168	1 1/4 x 1	10	02	18.80
837-209	1 1/2 x 1/2	10	02	25.59
837-210	1 1/2 x 3/4	10	02	25.59
837-211	1 1/2 x 1	10	02	25.59
837-212	1 1/2 x 1 1/4	10	02	25.59
837-247	2 x 1/2	10	02	36.43
837-248	2 x 3/4	10	02	36.43
837-249	2 x 1	10	02	36.43
837-250	2 x 1 1/4	10	02	36.43
837-251	2 x 1 1/2	10	02	36.43
837-287	2 1/2 x 1 1/2*	10	02	84.68
837-288	2 1/2 x 3/4*	10	02	84.68
837-289	2 1/2 x 1	10	02	63.33
837-290	2 1/2 x 1 1/4	10	02	63.33
837-291	2 1/2 x 1 1/2	10	02	63.33
837-292	2 1/2 x 2	10	02	63.33
837-333	3 x 1 1/2*	10	02	116.60
837-334	3 x 3/4*	10	02	112.86
837-335	3 x 1	5	02	100.45
837-336	3 x 1 1/4	5	02	100.45
837-337	3 x 1 1/2	5	02	100.45
837-338	3 x 2	5	02	100.45
837-339	3 x 2 1/2	5	02	100.45
837-415	4 x 1 1/2*	6	02	178.54
837-416	4 x 3/4*	6	02	178.54
837-417	4 x 1*	6	02	178.54
837-418	4 x 1 1/4*	6	02	178.54
837-419	4 x 1 1/2*	6	02	178.54
837-420	4 x 2	5	02	139.07
837-421	4 x 2 1/2	5	02	139.07
837-422	4 x 3	5	02	139.07
837-524	6 x 3/4*	5	02	232.13
837-525	6 x 1*	5	02	220.52
837-526	6 x 1 1/4*	5	02	232.13
837-527	6 x 1 1/2*	5	02	232.13
837-528	6 x 2	5	02	193.35
837-529	6 x 2 1/2*	5	02	299.80
837-530	6 x 3	5	02	193.35
837-532	6 x 4	5	02	193.35
837-578	8 x 2*	4	02	677.33
837-580	8 x 3*	4	02	677.33
837-582	8 x 4*	4	02	470.45
837-585	8 x 6	5	02	470.40
837-624	10 x 4*	1	92	1309.76



SP x Slip

REDUCER BUSHING (FLUSH STYLE) con't.				
Part No	Size (in)	Ctn Qty	Code	List Price
837-626	10 x 6	1	92	1105.11
837-628	10 X 8	1	92	1105.11
837-666	12 x 6*	1	92	1783.24
837-668	12 x 8	1	92	1277.13
837-670	12 x 10	1	92	1277.13

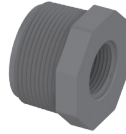
\*Sized with Bushing



MPT x Slip

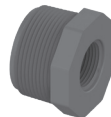
REDUCER BUSHING (FLUSH STYLE)				
Part No	Size (in)	Ctn Qty	Code	List Price
838-052	3/8 x 1/4	25	02	11.45
838-072	1/2 x 1/4	25	02	11.45
838-098	3/4 x 1/4	50	02	7.54
838-101	3/4 x 1/2	25	02	7.54
838-128	1 x 1/4*	50	02	13.13
838-130	1 x 1/2	25	02	12.00
838-131	1 x 3/4	25	02	12.00
838-166	1 1/4 x 1/2	25	02	24.30
838-167	1 1/4 x 3/4	10	02	24.30
838-168	1 1/4 x 1	10	02	24.30
838-207	1 1/2 x 1/4	25	02	28.95
838-209	1 1/2 x 1/2	10	02	30.48
838-210	1 1/2 x 3/4	10	02	30.48
838-211	1 1/2 x 1	10	02	30.48
838-212	1 1/2 x 1 1/4	10	02	30.48
838-247	2 x 1/2	10	02	37.24
838-248	2 x 3/4	10	02	37.24
838-249	2 x 1	10	02	37.24
838-250	2 x 1 1/4	10	02	37.24
838-251	2 x 1 1/2	10	02	37.24
838-287	2 1/2 x 1/2*	10	02	78.85
838-288	2 1/2 x 3/4*	10	02	78.85
838-289	2 1/2 x 1*	10	02	146.02
838-290	2 1/2 x 1 1/4*	10	02	78.85
838-291	2 1/2 x 1 1/2*	10	02	78.85
838-292	2 1/2 x 2	10	02	78.84
838-334	3 x 3/4*	10	02	146.02
838-335	3 x 1*	10	02	146.02
838-336	3 x 1 1/4*	10	02	146.02
838-337	3 x 1 1/2 *	10	02	146.02
838-338	3 x 2	5	02	146.02
838-339	3 x 2 1/2	5	02	146.02
838-419	4 x 1 1/2*	6	02	282.26
838-420	4 x 2	5	02	224.32
838-421	4 x 2 1/2*	6	02	224.32
838-422	4 x 3	5	02	224.32
838-528	6 x 2*	5	02	258.39
838-530	6 x 3*	5	02	258.39
838-532	6 x 4	5	02	258.41

\*Sized with Bushing



MPT x FPT

REDUCER BUSHING (FLUSH STYLE) con't.				
Part No	Size (in)	Ctn Qty	Code	List Price
839-052	3/8 x 1/4	25	02	26.13
839-072	1/2 x 1/4	25	02	26.13
839-073	1/2 x 3/8	25	02	26.13
839-098	3/4 x 1/4	25	02	19.48
839-099	3/4 x 3/8	25	02	19.48
839-101	3/4 x 1/2	25	02	16.04
839-128	1 x 1/4	25	02	31.49
839-129	1 x 3/8	25	02	25.14
839-130	1 x 1/2	25	02	25.14
839-131	1 x 3/4	25	02	25.14
839-166	1 1/4 x 1/2	10	02	26.66
839-167	1 1/4 x 3/4	10	02	26.66
839-168	1 1/4 x 1	10	02	26.66
839-209	1 1/2 x 1/2	10	02	31.60
839-210	1 1/2 x 3/4	10	02	31.60
839-211	1 1/2 x 1	10	02	31.60
839-212	1 1/2 x 1 1/4	10	02	31.60
839-247	2 x 1/2	10	02	46.29
839-248	2 x 3/4	10	02	46.29
839-249	2 x 1	10	02	46.29
839-250	2 x 1 1/4	10	02	46.29
839-251	2 x 1 1/2	10	02	46.29
839-292	2 1/2 x 2	5	02	62.74
839-337	3 x 1 1/2	5	02	85.18
839-338	3 x 2	5	02	85.18
839-339	3 x 2 1/2	5	02	85.18
839-420	4 x 2	5	02	171.92
839-422	4 x 3	5	02	224.32



MPT x BSP

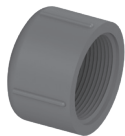
REDUCER BUSHING (FLUSH STYLE)				
Part No	Size (in)	Ctn Qty	Code	List Price
845-249	2 x 1	10	02	47.32

CAPS



Slip

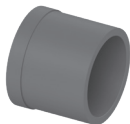
CAP				
Part No	Size (in)	Ctn Qty	Code	List Price
847-002	¼	25	02	16.50
847-003	⅜	25	02	16.50
847-005	½	25	02	12.70
847-007	¾	25	02	13.37
847-010	1	25	02	23.76
847-012	1¼	10	02	28.67
847-015	1½	10	02	28.67
847-020	2	10	02	56.63
847-025	2½	5	02	115.63
847-030	3	5	02	135.30
847-040	4	5	02	228.17
847-060	6	4	02	567.58
847-080	8	4	02	728.71
847-100	10	1	92	745.45
847-120	12	1	92	1118.73



FPT

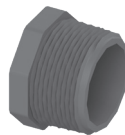
CAP				
Part No	Size (in)	Ctn Qty	Code	List Price
848-002	¼	25	02	15.88
848-003	⅜	25	02	15.88
848-005	½	25	02	15.88
848-007	¾	25	02	17.78
848-010	1	25	02	22.39
848-012	1¼	10	02	26.66
848-015	1½	10	02	30.48
848-020	2	10	02	59.83
848-025	2½	5	02	119.71
848-030	3	5	02	140.91
848-040	4	5	02	248.13

PLUGS



SP

PLUG				
Part No	Size (in)	Ctn Qty	Code	List Price
849-007	¾	50	02	13.20
849-010	1	50	02	14.90
849-012	1¼	25	02	19.04
849-015	1½	10	02	20.85
849-020	2	5	02	27.61



MPT

PLUG				
Part No	Size (in)	Ctn Qty	Code	List Price
850-002	¼	25	02	13.72
850-003	⅜	25	02	13.72
850-005	½	25	02	12.22
850-007	¾	25	02	12.70
850-010	1	25	02	15.54
850-012	1¼	10	02	22.93
850-015	1½	10	02	27.87
850-020	2	10	02	28.61
850-025	2½	5	02	79.91
850-030	3	5	02	93.24
850-040	4	5	02	181.51

FLANGES

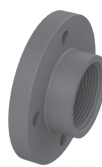


Slip

FLANGE (SOLID STYLE)

Part No	Size (in)	Ctn Qty	Code	List Price
851-005	½	25	02	39.26
851-007	¾	25	02	41.98
851-010	1	25	02	46.75
851-012	1¼	10	02	48.11
851-015	1½	10	02	49.20
851-020	2	10	02	65.46
851-025	2½	5	02	101.08
851-030	3	5	02	111.60
851-040	4	5	02	141.33
851-060	6	5	02	222.21

See NOTE under Flange Installation Data (pg. 4)



FPT

FLANGE (SOLID STYLE)

Part No	Size (in)	Ctn Qty	Code	List Price
852-005	½	25	02	47.00
852-007	¾	25	02	55.10
852-010	1	25	02	60.30
852-012	1¼	10	02	83.15
852-015	1½	10	02	90.74
852-020	2	10	02	92.78
852-025	2½	5	02	213.35
852-030	3	5	02	219.58
852-040	4	5	02	412.59

See NOTE under Flange Installation Data (pg. 4)



Blind

FLANGE

Part No	Size (in)	Ctn Qty	Code	List Price
853-005	½	5	02	55.07
853-007	¾	5	02	65.61
853-010	1	5	02	89.57
853-012	1¼	10	02	109.93
853-015	1½	5	02	109.93
853-020	2	5	02	164.26
853-025	2½	5	02	267.60
853-030	3	5	02	322.92
853-040	4	5	02	402.33
853-060	6	2	02	488.87
853-080	8	2	02	611.92

See NOTE under Flange Installation Data (pg. 4)



Slip

FLANGE (VAN STONE STYLE - LOOSE RING)				
Part No	Size (in)	Ctn Qty	Code	List Price
854-005	1/2	5	02	39.20
854-007	3/4	5	02	41.97
854-010	1	5	02	46.67
854-012	1 1/4	5	02	48.09
854-015	1 1/2	5	02	49.07
854-020	2	5	02	65.39
854-025	2 1/2	5	02	100.97
854-030FT	3	5	02	111.57
854-040FT	4	5	02	141.09
854-050FT	5	5	02	221.99
854-060FT	6	5	02	221.99
854-080FT	8	5	02	361.52
854-100FT	10	2	92	468.05
854-120FT	12	1	92	504.63

FT Represents FiberTuff Ring.  
See NOTE under Flange Installation Data (pg. 2)



Slip

FLANGE HUB SOCKET				
Part No	Size (in)	Ctn Qty	Code	List Price
82090	3	5	02	35.88
82092	4	5	02	50.75
82093	5	5	02	110.00
82094	6	5	02	93.99
82095	8	5	02	258.41
82096	10	2	92	339.52
82097	12	1	92	390.76



SP

FLANGE (VAN STONE STYLE - LOOSE RING)				
Part No	Size (in)	Ctn Qty	Code	List Price
856-005	1/2	25	02	39.45
856-007	3/4	5	02	42.28
856-010	1	5	02	47.09
856-012	1 1/4	10	02	48.59
856-015	1 1/2	5	02	49.54
856-020	2	5	02	65.87
856-025	2 1/2	5	02	101.78
856-030FT	3	5	02	112.46
856-040FT	4	5	02	142.30
856-050FT	5	5	02	221.98
856-060FT	6	5	02	223.82
856-080FT	8	5	02	400.42
856-100FT	10	2	92	468.05
856-120FT	12	2	92	504.63

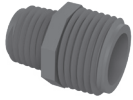
FT Represents FiberTuff Ring.  
See NOTE under Flange Installation Data (pg. 4)



SP

FLANGE HUB SPIGOT				
Part No	Size (in)	Ctn Qty	Code	List Price
82060	3	5	02	41.28
82062	4	5	02	61.78
82063	5	5	02	123.52
82064	6	5	02	135.08
82065	8	2	02	301.85
82066	10	2	92	367.68
82067	12	2	92	407.83

NIPPLES



MPT x MPT

REDUCING TBE NIPPLE

Part No	Size (in)	Ctn Qty	Code	List Price
882-101	¾ x ½	50	02	3.16

See Nipple Price List (discounts will vary)

UNIONS



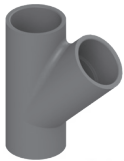
Slip x MPT

UNION (O-RING TYPE)

Part No	Size (in)	Ctn Qty	Code	List Price
896-005	½	10	02	35.62
896-007	¾	10	02	37.65
896-010	1	10	02	52.92
896-012	1¼	5	02	102.72
896-015	1½	5	02	108.83
896-020	2	5	02	133.08
896-030	3	5	02	300.32
896-168	1¼ x 1	5	02	140.07

Pressure rated at 235 p.s.i. at 73°F.  
Unions are listed as NSF 61.

WYES

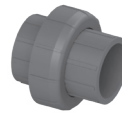


Slip x Slip x Slip

WYE

Part No	Size (in)	Ctn Qty	Code	List Price
875-020 †	2	5	01	219.50
875-030 ‡	3	5	01	705.76
875-040 ‡	4	4	01	971.59
875-060 ‡	6	5	01	1194.32
875-080 §	8	5	01	2401.89

† 235 psi working pressure  
‡ 150 psi working pressure  
§ 100 psi working pressure



Slip x Slip

UNION (O-RING TYPE)

Part No	Size (in)	Ctn Qty	Code	List Price
897-002	¼	25	02	49.72
897-003	⅜	25	02	49.72
897-005	½	10	02	26.02
897-007	¾	10	02	33.80
897-010	1	10	02	38.57
897-012	1¼	5	02	76.60
897-015	1½	5	02	86.72
897-020	2	5	02	117.54
897-030	3	5	02	218.92
897-040	4	4	02	281.13

Pressure rated at 235 p.s.i. at 73°F.  
Unions are listed as NSF 61.

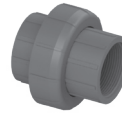


Slip x Slip x Slip

REDUCING WYE

Part No	Size (in)	Ctn Qty	Code	List Price
875-247 †	2 x 2 x ½*	10	02	261.16
875-248 †	2 x 2 x ¾*	10	02	261.16
875-249 †	2 x 2 x 1*	10	02	261.16
875-250 †	2 x 2 x 1¼*	10	02	261.16
875-251 †	2 x 2 x 1½*	10	02	261.16
875-335 ‡	3 x 3 x 1*	5	02	822.62
875-336 ‡	3 x 3 x 1¼*	5	02	822.62
875-337 ‡	3 x 3 x 1½*	5	02	822.62
875-338 ‡	3 x 3 x 2*	4	02	822.62
875-339 ‡	3 x 3 x 2½*	5	02	822.62
875-420 ‡	4 x 4 x 2*	4	02	1034.23
875-422 ‡	4 x 4 x 3*	4	02	1034.23
875-528 ‡	6 x 6 x 2*	5	02	1126.09
875-530 ‡	6 x 6 x 3*	5	02	1126.09
875-532 ‡	6 x 6 x 4	5	02	910.25
875-578 §	8 x 8 x 2*	1	02	3142.07
875-580 §	8 x 8 x 3*	1	02	3142.07
875-582 §	8 x 8 x 4	1	02	2401.89
875-585 §	8 x 8 x 6*	1	02	2930.99

\* Sized with Bushing  
† 235 psi working pressure  
‡ 150 psi working pressure  
§ 100 psi working pressure



FPT x FPT

UNION (O-RING TYPE)

Part No	Size (in)	Ctn Qty	Code	List Price
898-005	½	10	02	30.86
898-007	¾	10	02	43.22
898-010	1	10	02	57.43
898-012	1¼	5	02	109.61
898-015	1½	5	02	135.73
898-020	2	5	02	208.78
898-030	3	5	02	529.63
898-040	4	4	02	622.36

Pressure rated at 235 p.s.i. at 73°F.  
Unions are listed as NSF 61.



Slip x FPT

UNION (O-RING TYPE)

Part No	Size (in)	Ctn Qty	Code	List Price
899-005	½	10	02	32.40
899-007	¾	10	02	45.30
899-010	1	10	02	60.22
899-012	1¼	5	02	115.07
899-015	1½	5	02	142.42
899-020	2	5	02	219.26

Pressure rated at 235 p.s.i. at 73°F.  
Unions are listed as NSF 61.



Viton

UNION O-RING (CURRENT STYLE)				
Part No	Size (in)	Ctn Qty	Code	List Price
80115	1/2	1	02	5.35
80118	3/4	1	02	5.95
80215	1	1	02	7.29
80221	1 1/4	1	02	12.49
80223	1 1/2	1	02	13.74
80227	2	1	02	13.74
80235	3	1	02	31.23

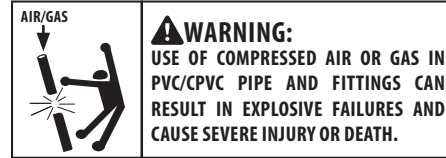


Viton

UNION O-RING (PRIOR TO 2004)				
Part No	Size (in)	Ctn Qty	Code	List Price
80213	1/2	1	02	5.35
80216	3/4	1	02	5.95
80222	1	1	02	7.29
80225	1 1/4	1	02	12.49
80227	1 1/2	1	02	13.74
80231	2	1	02	16.86
80240	3	1	02	31.23

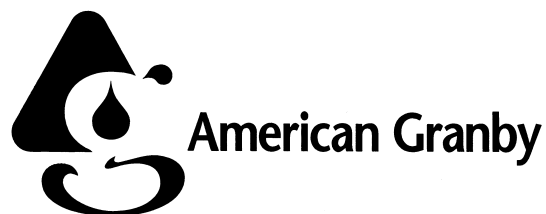
# PVC SCHEDULE 80 PRICE LIST

DO NOT USE LASCO FITTINGS FOR COMPRESSED AIR OR GASES.  
DO NOT TEST PVC PIPING SYSTEMS WITH COMPRESSED AIR OR GASES.  
DO NOT USE FITTINGS WITH LIQUIDS NOT RECOMMENDED BY LASCO.  
MODIFICATIONS OF FITTINGS VOIDS THE WARRANTY.



## STANDARDS AND SPECIFICATIONS – SCHEDULE 80

- ASTM D-1784 – Rigid Poly (Vinyl Chloride) (PVC) Compounds and Chlorinated Poly Vinyl Chloride) (CPVC) Compounds.
- ASTM D-2464 – Threaded type Poly (Vinyl Chloride) (PVC) Plastic Pipe Fittings, Schedule 80.
- ASTM D-2467 – Socket Type Poly (Vinyl Chloride) (PVC) Plastic Pipe Fittings, Schedule 80.
- ASTM F-1970 – Standard Specification for Special Engineered Fittings, Appurtenances or Valves for use in Poly (Vinyl Chloride) (PVC) or Chlorinated Poly (Vinyl Chloride) (CPVC) Systems.
- MATERIAL – LASCO Schedule 80 Fittings are produced from PVC TYPE 1, CELL Classification 12454-B.
- O-RINGS are produced from a fluorocarbon elastomer (VITON).
- LISTINGS – NSF (National Sanitation Foundation) for potable water services.



CUSTOMER SERVICE

Phone: (315) 451-1100 or (800) 776-2266 | Fax: (800) 729-3299  
7652 Morgan Road • Liverpool, New York 13090