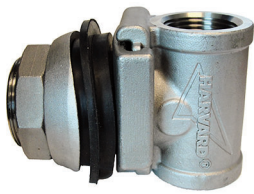
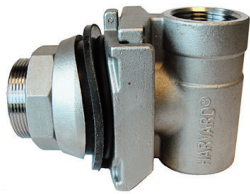


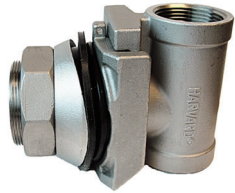
# Pitless Adapters - Stainless Steel



**PT300SS**



**PT800SS**



**PT825SS**

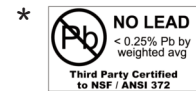


**PT3000SS**

### HARVARD Pitless Adapter Features:



- Cast from 304 cast stainless steel to insure long life and durability in the most aggressive well conditions.
- **Extended casing nipple** makes installation easy.
- Rubber inner and outer casing gaskets for certified & approved water tight seal from ground water contamination.
- Built-in lowering eyelet for easier installation.
- All PT Series pitless adapters are individually boxed.
- All PT Series pitless adapters are 100% pressure tested.
- **All PT Series pitless adapters are certified and approved watertight to ASSE Standard #1093-2019 and WSC PAS-97 (2019) standards.**
- 304 Stainless Steel pitless adapters are Lead Free.
- **Third party certified to NSF/ANSI 61&372 or \*NSF/ANSI 372**



Part Number	Slide Stop Style	Drop Pipe Size	Nominal Well Casing	Casing Hole Opening	Max Load Capacity (lbs.)	Ctn Qty
<b>Cast 304 STAINLESS STEEL</b>						
PT300SS	Top Bar	1"	5" through 12"	1 3/4"	6,000	10
PT800SS	Top Bar	1"	5" through 12"	1 3/4"	6,000	10
PT825SS	Top Bar	1-1/4"	5" through 12"	2 1/8"	6,000	10
PT3000SS *	U cup	2"	5" through 12"	3 1/8"	6,000	4